



Getting started

I've just got a LAMS account. What do I do?!

There are three views that a teacher or designer needs to be familiar with in LAMS:

- Author
- Monitor
- Learner

Author, Monitor and Learner are briefly introduced here. Full instructions for authoring and using LAMS can be found in the 'Lams Teacher's Guide' <http://www.melcoe.mq.edu.au/documents/LAMS.pdf>

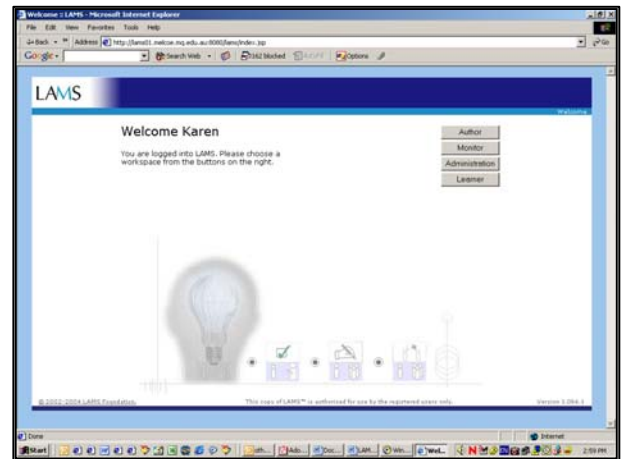


Figure 1: The LAMS Welcome and Login page

Author or create a sequence

- Spend some time thinking about an activity you'd like to do with LAMS and your students. This part of the process should take the most time.
- Log in as Author from the Welcome page.
- Drag and drop tools into the authoring space from the left hand menu corresponding to your proposed design.
- Double click on the tools in the authoring space and fill in the forms with instructions, questions, and resources.

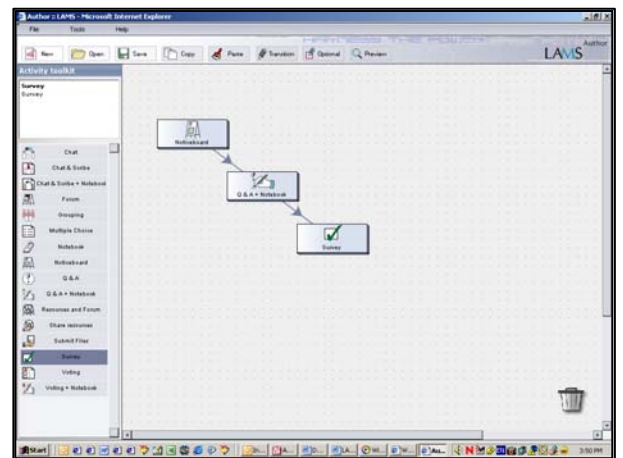


Figure 2: LAMS Authoring space

- Create transitions between the tools by clicking on the Transition tool in the top menu, clicking on one tool and dragging the arrow to another tool. This creates a sequence or pathway through your activities.
- Drag transition arrows and tools to the trash if you want to delete them.
- Ensure you save your sequence as you create your LAMS design.



- To **preview** your lesson before running it for students click on the Preview button on the top menu bar. The first screen (Figure 3) will appear briefly before taking you to the Learner view (Figure 5). When you have finished viewing the sequence, close the Preview window and return to the window seen in Figure 3. From here you can make any necessary changes. Save your design again.
- Note: If the screen in Figure 3 appears for more than a few seconds you may need to de-activate the pop-up window blocker on your Internet browser.

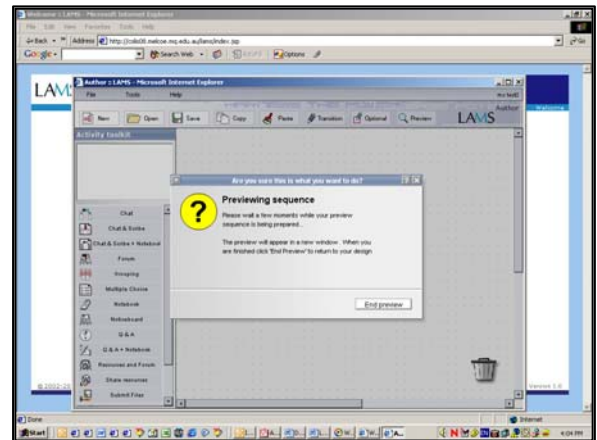


Figure 3: Preview in the Authoring view

Run the sequence in Monitor

- To give your students access to the sequence, log into Monitor via the Welcome page.
- Click on Create from the left hand frame – click on the relevant sequence from the list that appears, and choose Open. Your LAMS session should appear highlighted in the left hand frame in Monitor.
- In the right hand frame click on Select Session Class, choose your class, and then click Start to activate it. This sequence is now available to your learners.

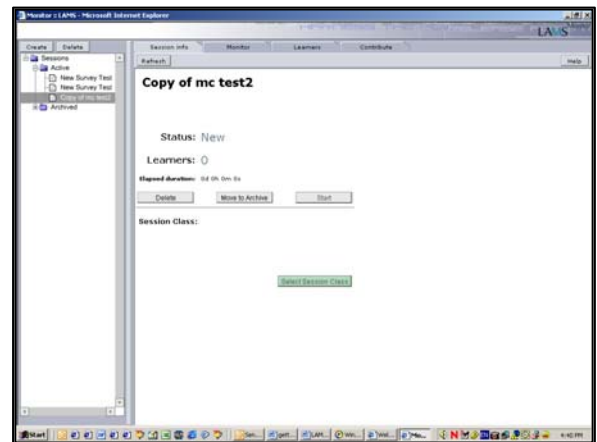


Figure 4: Monitoring view

View LAMS as a Learner

- From the Welcome page, log in as Learner.
- Click on a sequence in the left hand frame.
- The sequence should run and present activities for the learner. You will notice that this screen is identical to the one you saw through the Preview function while in Authoring mode.

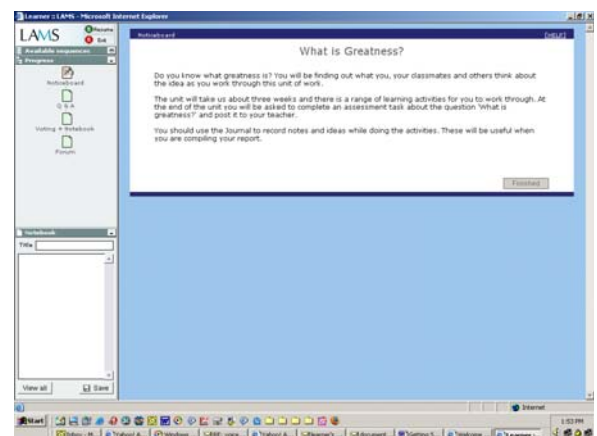


Figure 5: The Learner's view